

**IL22 Antibody**  
**Rabbit mAb**  
**Catalog # AP93113****Specification**

---

**IL22 Antibody - Product Information**

Application	<b>WB</b>
Primary Accession	<a href="#">O9GZX6</a>
Clonality	<b>Monoclonal</b>
<b>Other Names</b>	
IL21; IL22; ILD110; ILTIF; interleukin 21; Interleukin 22; TIFa; TIFIL23; zcyto18;	
Isotype	<b>Rabbit IgG</b>
Host	<b>Rabbit</b>
Calculated MW	<b>20011 Da</b>

**IL22 Antibody - Additional Information**

Dilution	<b>WB~~1:1000</b>
Purification	<b>Affinity-chromatography</b>
Immunogen	<b>A synthesized peptide derived from human IL22</b>
Description	<b>Cytokine that contributes to the inflammatory response in vivo.</b>
Storage Condition and Buffer	<b>Rabbit IgG in phosphate buffered saline , pH 7.4, 150mM NaCl, 0.02% sodium azide and 50% glycerol. Store at +4°C short term. Store at -20°C long term. Avoid freeze / thaw cycle.</b>

**IL22 Antibody - Protein Information****Name** IL22**Synonyms** ILTIF, ZCYTO18**Function**

Cytokine that plays a critical role in modulating tissue responses during inflammation (PubMed:[17204547](http://www.uniprot.org/citations/17204547)). Plays an essential role in the regeneration of epithelial cells to maintain barrier function after injury and for the prevention of further tissue damage (PubMed:[17204547](http://www.uniprot.org/citations/17204547)). Unlike most of the cytokines, has no effect on immune cells. Signals through a heterodimeric receptor composed of two subunits, the specific receptor IL22RA1 which is present on non-immune cells in many organs and the shared subunit IL10RB (PubMed:[10875937](http://www.uniprot.org/citations/10875937), PubMed:[18599299](http://www.uniprot.org/citations/18599299)). Ligation of IL22RA1 with IL22 induces activation of the tyrosine kinases JAK1 and TYK2, which in turn activates STAT3. In turn, promotes cell survival and proliferation through STAT3, ERK1/2 and PI3K/AKT

pathways (PubMed: [25793261](http://www.uniprot.org/citations/25793261), PubMed: [31311100](http://www.uniprot.org/citations/31311100)). Promotes phosphorylation of GSK3B at 'Ser-9' and CTTN (By similarity). Promotes epithelial cell spreading (By similarity).

#### Cellular Location

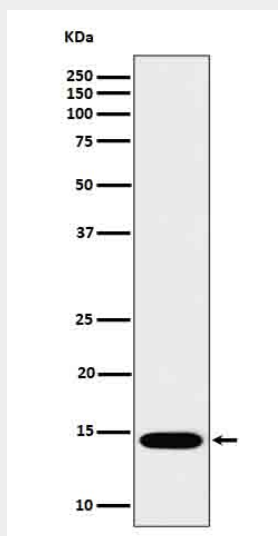
Secreted.

#### IL22 Antibody - Protocols

Provided below are standard protocols that you may find useful for product applications.

- [Western Blot](#)
- [Blocking Peptides](#)
- [Dot Blot](#)
- [Immunohistochemistry](#)
- [Immunofluorescence](#)
- [Immunoprecipitation](#)
- [Flow Cytometry](#)
- [Cell Culture](#)

#### IL22 Antibody - Images



Western blot analysis of IL22 in Recombinant Human IL22 protein cell lysate.